

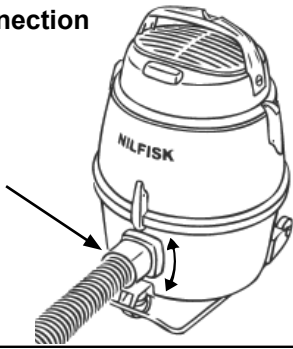
# GM 80P - GM 80P LC

## Instructions for use

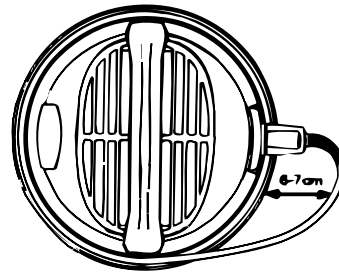


<b>EN</b>	Operating instructions .....	5
<b>DE</b>	Bedienungsanweisungen .....	10
<b>FR</b>	Instructions de fonctionnement .....	16
<b>NL</b>	Gebruiksaanwijzingen .....	22
<b>IT</b>	Istruzioni per l'uso .....	28
<b>NO</b>	Bruksanvisning .....	34
<b>SV</b>	Bruksanvisning .....	39
<b>DA</b>	Betjeningsvejledning .....	45
<b>FI</b>	Käyttöohje .....	50
<b>ES</b>	Instrucciones de funcionamiento .....	55
<b>PT</b>	Instruções de Funcionamento .....	61
<b>EL</b>	Οδηγίες λειτουργίας .....	67
<b>TR</b>	Kullanma Talimatları .....	73
<b>SL</b>	Navodila za delovanje .....	82
<b>HR</b>	Upute za uporabu .....	88
<b>SK</b>	Návod na obsluhu .....	93
<b>CS</b>	Návod k obsluze .....	99
<b>PL</b>	Instrukcje dotyczące obsługi .....	104
<b>HU</b>	Használati útmutató .....	110
<b>RO</b>	Instrucțiuni de utilizare .....	116
<b>BG</b>	Указания за експлоатация .....	122
<b>RU</b>	Руководство по эксплуатации .....	128
<b>ET</b>	Tööjuhised .....	134
<b>LV</b>	Norādījumi par ekspluatāciju .....	139
<b>LT</b>	Naudojimo instrukcija .....	145
<b>JA</b>	作手順.....	150
<b>KO</b>	사용법.....	155
<b>TH</b>	คำแนะนำการใช้งาน.....	160
<b>MS</b>	Arahan Operasi.....	165

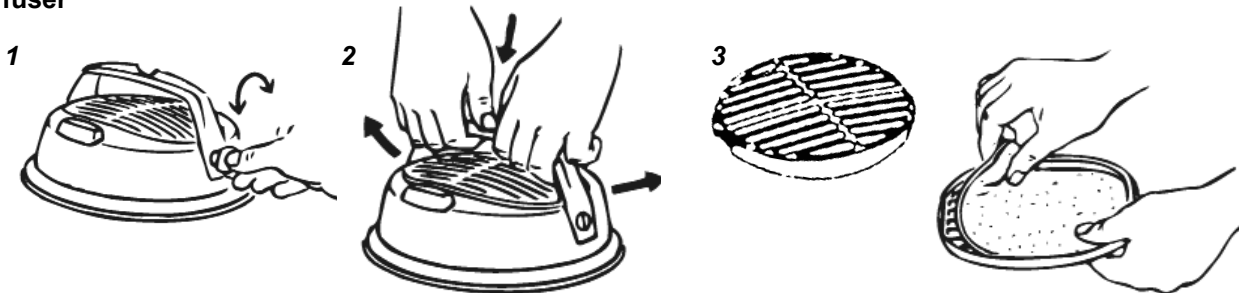
**Hose connection**



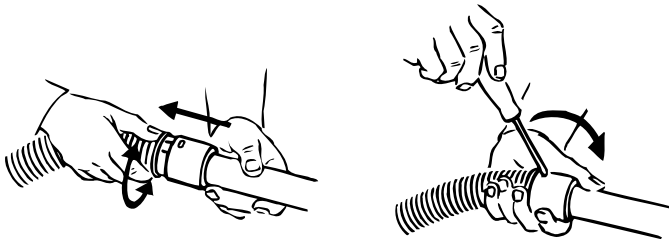
**Power cord**



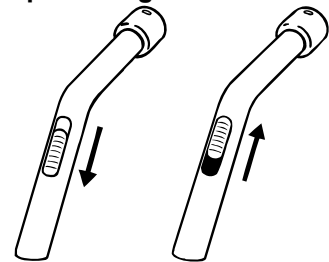
**Diffuser**



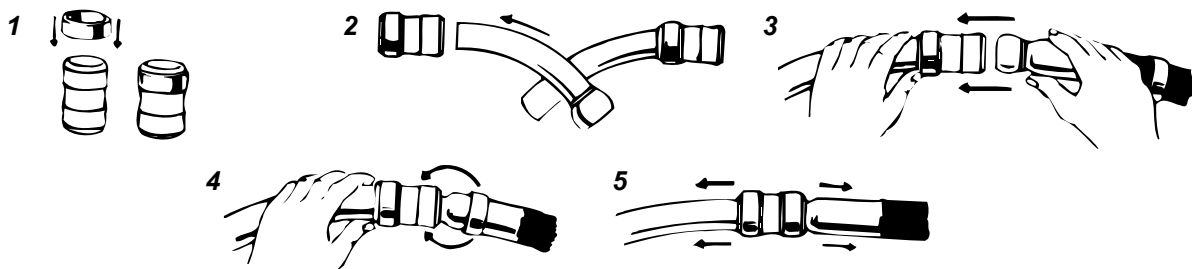
**Plastic hose and plastic tube**



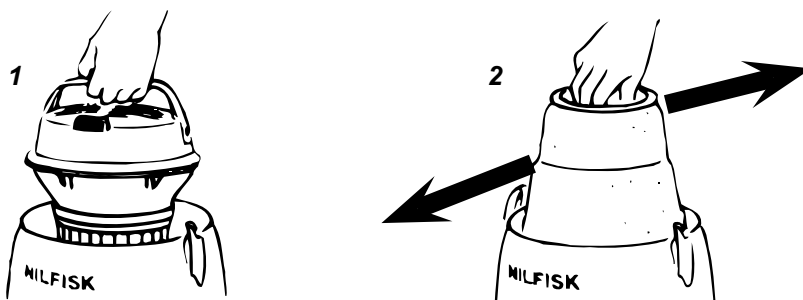
**Suction power regulation**



**Rubber or plastic hose with curved steel tube**



**Filter cleaning**



**Suction with dust bag**

1



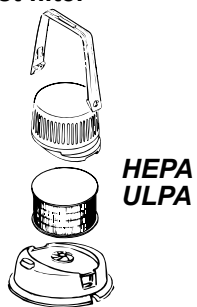
2



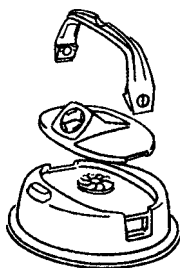
3



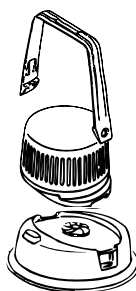
**Exhaust filter**



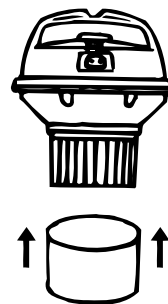
**Blowing attachment**



**Sound suppressor**




**Motor protection filter**




# 1 IMPORTANT SAFETY INSTRUCTIONS

## 1.1 Symbols used to mark instructions


### DANGER


 Danger that leads directly to serious or irreversible injuries, or even death.

### WARNING

 Danger that can lead to serious injuries or even death.

### CAUTION

 Danger that can lead to minor injuries and damage.

 Before starting up your machine for the first time, this instruction manual must be read through carefully. Save the instructions for later use.

## 1.2 Instructions for use

Besides the operating instructions and the binding accident prevention regulations valid in the country of use, observe recognised regulations for safety and proper use.

## 1.3 Purpose and intended use

This machine is for industrial use, such as e.g. plants, construction sites and workshops. This machine is also intended for commercial use, for example in hotels, schools, hospitals, factories, shops, offices and rental businesses. Accidents due to misuse can only be prevented by those using the machine.

READ AND FOLLOW ALL SAFETY INSTRUCTIONS.

This machine is suitable for picking up dry, non-flammable dust. Any other use is considered as improper use. The manufacturer accepts no liability for any damage resulting from such use. The risk for such use is borne solely by the user. Proper use also includes proper operation, servicing and repairs as specified by the manufacturer.

For Dust Class L machines (with type designation LC) following applies:  
The appliance is suitable for picking up dry, non-flammable dust, hazardous dusts with OEL<sup>1)</sup> value > 1mg/m<sup>3</sup>. Dust Class L (IEC 60335-2-69). The dusts which belong to this class have OEL<sup>1)</sup> values > 1mg/m<sup>3</sup>. For machines intended for the Dust Class L, the filter material is tested. The maximum degree of permeability is 1% and there is no special requirement for disposal. Observe national regulations before use.



## 1.4 Important warnings

### WARNING

- This machine is for dry use only.
- Do not use to pick up flammable or combustible liquids such as gasoline, or use in areas where they may be present.
- To reduce the risk of fire, electric shock, or injury, please read and follow all safety instructions and caution markings before use. This vacuum cleaner is designed to be safe when used for cleaning

functions as specified. Should damage occur to electrical or mechanical parts, the cleaner and / or accessory should be repaired by a competent service station or the manufacturer before use in order to avoid further damage to the machine or physical injury to the user.

- To reduce the risk of electric shock – Do not use outdoor or on wet surfaces.
- This machine is for indoor use only.
- This machine shall only be stored indoors.
- Do not leave the machine when it is plugged in. Unplug from the socket when not in use and before maintenance.
- Do not use with damaged cord or plug. To unplug grasp the plug, not the cord. Do not handle plug or cleaner with wet hands. Turn off all controls before unplugging.
- Do not pull or carry by cord, use cord as a handle, close a door on cord, or pull cord around sharp edges or corners. Do not run cleaner over cord. Keep cord away from heated surfaces.
- Keep hair, loose clothing, fingers and all parts of the body away from openings and moving parts. Do not put any objects into openings or use with opening blocked. Keep openings free of dust, lint, hair, and anything else that could reduce the flow of air.
- For standard machines (without type designation LC) following applies: This machine is not suitable for picking up hazardous dust.
- Do not pick up anything that is burning or smoking, such as cigarettes, matches or hot ashes.
- This appliance is not intended for use by persons (including children) with reduced physical, sensory or mental capabilities, or lack of experience and knowledge.
- Children shall be supervised to make sure that they do not play with the appliance.
- Cleaning and user maintenance shall not be made by children without supervision.
- Use extra care when cleaning on stairs.
- Do not use unless filters are fitted.
- If the cleaner is not working properly or has been dropped, damaged, left outdoors, or dropped into water, return it to a service center or dealer.
- Operators shall be adequately instructed on the use of these machines.

## 1.5 Double-insulated appliances\*)

### CAUTION

- Use only as described in this manual and only with the manufacturer's recommended attachments.
- **BEFORE YOU PLUG IN YOUR CLEANER**, check the rating plate at the cleaner to see if the rated voltage agrees within 10% of the voltage available.
- This appliance is provided with double insulation. Use only identical replacement parts. See instructions for servicing double insulated appliances.

In a double-insulated appliance, two systems of insulation are provided instead of grounding. No grounding means is provided on a double-insulated appliance, nor should a mean for grounding be added to the appliance. Servicing a double-insulated appliance requires extreme care and knowledge of the system, and should be done only by qualified service personnel. Replacement parts for a double-insulated appliance must be identical to the parts they replace. A double insulated appliance is marked with the words "DOUBLE INSULATION" or "DOUBLE INSULATED." The symbol (square within a square) may also be used on the product.

The machine is equipped with a specially designed cord which if damaged, must be replaced by a cord of the same type. This is available at authorised service centres and dealers and must be installed by trained personnel.

## 1.6 Electrical connection

### WARNING

- The vacuum cleaner must not be used if the electrical cable or plug show any sign of damage. Regularly inspect the cable and the plug for damage. If this becomes damaged, it should be repaired only by Nilfisk or an authorised Nilfisk Service Dealer, in order to avoid a hazard.
- Do not handle the electrical cable or plug with wet hands.
- Do not unplug by pulling on cable. To unplug, grasp the plug, not the cable. The plug must always be removed from the socket outlet before starting any service or repair work of the machine or the cable.

## 1.7 Hazardous materials

### WARNING

Hazardous materials.

Vacuuming up hazardous materials can lead to serious or even fatal injuries.

The following materials must not be picked up by the machine:

- hot materials (burning cigarettes, hot ash, etc.)
- flammable, explosive, aggressive liquids (e.g. petrol, solvents,

acids, alkalis, etc.)

- flammable, explosive dust (e.g. magnesium or aluminium dust, etc.)

For standard machines (without type designation LC) following further applies: The following materials must not be picked up by the machine:

- Hazardous dust.

### 1.8 Maintenance

Always keep the cleaner in a dry place. The cleaner is designed for continuous heavy work. Depending on the number of running hours – the dust filters should be renewed. Keep the container clean with a dry cloth, and a small amount of spray polish.

For Dust Class L machines (with type designation LC) following applies:

During maintenance and cleaning, handle the machine in such a manner that there is no danger for maintenance staff or other persons.

In the maintenance area

- Use filtered compulsory ventilation
- Wear protective clothing
- Clean the maintenance area so that no harmful substances get into the surroundings.

### 1.9 Regular servicing and inspection

Regular servicing and inspection of your machine must be carried out by suitably qualified personnel in accordance with relevant legislation and regulations. In particular, electrical tests for earth continuity, insulation resistance, and condition of the flexible cord should be checked frequently.

In the event of any defect, the machine **MUST** be withdrawn from service, completely checked and repaired by an authorized service technician.

At least once a year, a Nilfisk technician or an instructed person must perform a technical inspection including filters, air tightness and control mechanisms.

For Dust Class L machines (with type designation -0L, -2L) following applies:

During maintenance and cleaning, handle the machine in such a manner that there is no danger for maintenance staff or other persons.

In the maintenance area

- Use filtered compulsory ventilation
- Wear protective clothing
- Clean the maintenance area so that no harmful substances get into the surroundings.

During maintenance and repair work all contaminated parts that could not be cleaned satisfactorily must be:

- Packed in well sealed bags
- Disposed of in a manner that complies with valid regulations for such waste removal.

For details of after sales service contact your dealer or Nilfisk service representative responsible for your country. See reverse of this document.

### 2.0 Warranty

Our general conditions of business are applicable with regard to the guarantee.

Unauthorized modifications to the appliance, the use of incorrect brushes in addition to using the appliance in a way other than for the intended purpose exempt the manufacturer from any liability for the resulting damage.



Equipment marked with the crossed-out wheeled bin symbol indicates that used electrical and electronic equipment should not be discarded together with unseparated household waste. To avoid negative effects on human health and the environment the equipment must be collected separately at the designated collection points.

Users of electrical and electronic household equipment must use the municipal collection schemes. Please note that commercially used electrical and electronic equipment, shall not be disposed of via municipal collection schemes. We will be pleased to inform you about suitable disposal options.



## 2.1 Spare parts and accessories

**CAUTION****Spare parts and accessories.**

The use of non-genuine spare parts, brushes and accessories can impair the safety and or function of the appliance.

Only use original spare parts and accessories from Nilfisk.

Spare parts that can affect health and safety of the operator and or function of the appliance, are specified below:

Description	Order No.
Filter, polyester 1 pcs.	62348600
Filter, cotton 1 pcs.	61543000
Dust bag, fleece 5 pcs.	107418525
Dust bag, paper 5 pcs.	81620000
Motor protection filter, 1 pcs.	11730410
Exhaust micro-static filter, 2 pcs.	11641000

**Specifications**

		GM 80P 100 V	GM 80P 110-120 V	GM 80P 110-120 V	GM 80P 220-240 V	GM 80P LC 220-240 V
Rated power	W HP	850	1100 1.48	1100 1.48	1200	1200
Protection class (electrical)		I	II □	I	II □	II □
Max. airflow	l/s	33	38	38	38	38
	m <sup>3</sup> /h	120	137	137	137	137
	CFM	70	81	81	81	81
Max. vacuum	kPa	18	20	20	27	27
	hPa	180	209	209	270	270
	inH <sub>2</sub> O	72	84	84	108	108
Sound pressure level L <sub>PA</sub> (IEC 60335-2-69)	dB(A)	66 ± 2	66 ± 2	66 ± 2	66 ± 2	66 ± 2
Vibration ISO 5349 a <sub>h</sub>	m/s <sup>2</sup>	≤ 2,5	≤ 2,5	≤ 2,5	≤ 2,5	≤ 2,5
Sack filter, surface area	m <sup>2</sup>	2100	2100	2100	2100	2100
Dust bag capacity litres	L	6,25	6,25	6,25	6,25	6,25
Weight	kg	8	8	8	8	8
	lb	21	21	21	21	21
Dust Class		-	-	-	-	L

Specifications and details are subject to change without prior notice.

**Declaration of Conformity**

Prohlášení o shodě  
 Konformitätserklärung  
 Overensstemmelseserklæring  
 Declaración de conformidad  
 Vastavusdeklaratsioon  
 Déclaration de conformité  
 Vaatimustenmukaisuusvakuutus

Декларация за съответствие  
 Δήλωση συμμόρφωσης  
 Megfelelősségi nyilatkozat  
 Izjava o skladnosti  
 Dichiarazione di conformità  
 Atitikties deklaracija  
 Atbilstības deklarācija  
 Samsvarserklæring  
 Conformiteitsverklaring

Declaração de conformidade  
 Deklaracija zgodności  
 Declaratie de conformitate  
 Декларация о соответствии  
 Försäkran om överensstämmelse  
 Vyhlásenie o zhode  
 Izjava o skladnosti  
 Uygunluk beyanı

**Manufacturer /** Výrobce / Hersteller / Fabrikant /  
 Fabricante / Κατασκευαστής / Gyártó / Proizvođač /  
 Fabbricante / Gamintojas / Ražotājs / Produzent /  
 Fabrikant / Fabricante / Producent / Producător /  
 производитель / Tillverkaren / Výrobca / Proizvajalec/  
 Üretici firma:

**Nilfisk A/S, Kornmarksvej 1  
 DK-2605 Broendby, DENMARK**

Product / Produkt / Producto, Toode, Produit, Tuote/  
 Продукт / Προϊόν / Termék / Proizvod / Prodotto /  
 Produktas / Produkts / Artikel / Produtos / Produis /  
 Izdelek / Ürün

**GM80P, GM80P LC, GMP**

Description / Popis / Beschreibung / Beskrivelse /  
 Descripción / Kirjeldus / La description / Kuvaus /  
 Описание / Περιγραφή / Leirás / Opis / Descrizione /  
 Aprašymas / Apraksts / Beschrijving / Descrição /  
 Descriere / Beskrivning / Popis / Açıklama

**VAC - Commercial - Dry  
 220-240V 50-60Hz, IPX0**

**EN**

**We, Nilfisk hereby declare under our sole  
 responsibility, that the above-mentioned  
 product(s) is/are in conformity with the  
 following directives and standards.**

**LT**

Mes, „ Nilfisk“, prisiimdami visišką  
 atsakomybę pareiškiame, kad pirmiau  
 minėtas produktas (-ai) atitinka šias  
 direktyvas ir standartus

**CS**

My, Nilfisk prohlašujeme na svou výlučnou  
 odpovědnost, že výše uvedený výrobek je ve  
 shodě s následujícími směrnici a normami.

**LV**

Mēs, Nilfisk, ar pilnu atbildību apliecinām, ka  
 iepriekšminētais produkts atbilst šādām  
 direktīvām un standartiem

**DE**

Wir, Nilfisk erklären in alleiniger  
 Verantwortung, dass das oben genannte  
 Produkt den folgenden Richtlinien und  
 Normen entspricht.

**NO**

Vi, Nilfisk erklærer herved under eget ansvar,  
 at det ovennevnte produktet er i samsvar  
 med følgende direktiver og standarder

**DA**

Vi, Nilfisk erklærer hermed under eget ansvar  
 at ovennævnte produkt(er) er i  
 overensstemmelse med følgende direktiver og  
 standarder.

**NL**

We verklaren Nilfisk hierbij op eigen  
 verantwoordelijkheid, dat het  
 bovengenoemde product voldoet aan de  
 volgende richtlijnen en normen

**ES**

Nosotros, Nilfisk declaramos bajo nuestra  
 única responsabilidad que el producto antes  
 mencionado está en conformidad con las  
 siguientes directivas y normas

**PT**

Nós, a Nilfisk declaramos, sob nossa exclusiva  
 responsabilidade, que o produto acima  
 mencionado está em conformidade com as  
 diretrizes e normas a seguir

**ET**

Meie, Nilfisk Käesolevaga kinnitame ja  
 kanname ainuisikulist vastutust, et eespool  
 nimetatud toode on kooskõlas järgmiste  
 direktiivide ja

**PL**

My, Nilfisk Niniejszym oświadczamy z pełną  
 odpowiedzialnością, że wyżej wymieniony  
 produkt jest zgodny z następującymi  
 dyrektywami i normami..

**FR**

Nilfisk déclare sous notre seule responsabilité  
 que le produit mentionné ci-dessus est  
 conforme aux directives et normes suivantes.

**RO**

Noi, Nilfisk Prin prezenta declarăm pe propria  
 răspundere, că produsul mai sus menționat  
 este în conformitate cu următoarele  
 standarde și directive



Me, Nilfisk täten vakuutamme omalla vastuulla, että edellä mainittu tuote on yhdenmukainen seuraavien direktiivien ja standardien mukaisesti



Мы, Nilfisk настоящим заявляем под нашу полную ответственность, что вышеперечисленные продукция соответствует следующими директивам и стандартам.



Ние, Nilfisk С настоящото декларираме на своя лична отговорност, че посочените по-горе продуктът е в съответствие със следните директиви и стандарти.



Vi Nilfisk förklarar härmed under eget ansvar att ovan nämnda produkt överensstämmer med följande direktiv och normer.



Εμείς, Nilfisk δηλώνουμε με αποκλειστική μας ευθύνη, ότι το προαναφερόμενο προϊόν συμμορφώνεται με τις ακόλουθες οδηγίες και πρότυπα.



My, Nilfisk prehlasujeme na svoju výlučnú zodpovednosť, že vyššie uvedený výrobok je v zhode s nasledujúcimi smernicami a normami.



Mi, Nilfisk Kijelentjük, egyedüli felelősséggel, hogy a fent említett termék megfelel az alábbi irányelveknek és szabványoknak



Mi, Nilfisk izjavljamo s polno odgovornostjo, da je zgoraj omenjeni izdelek v skladu z naslednjimi smernicami in standardi.



Mi, Nilfisk Izjavljujemo pod punom odgovornošću, da gore navedeni proizvod u skladu sa sljedećim direktivama i standardima.



Nilfisk, burada yer alan tüm sorumluluklarımıza göre, yukarıda belirtilen ürünün aşağıdaki direktifler ve standartlara uygun olduğunu beyan ederiz.



Noi, Nilfisk dichiara sotto la propria responsabilità, che il prodotto di cui sopra è conforme alle seguenti direttive e norme.

<b>2006/42/EC</b>	<b>EN 60335-1:2012+A11:2014+A13:2017</b> <b>EN 60335-2-69:2012</b>
<b>2014/30/EU</b>	<b>EN 55014-1:2017+A11:2020</b> <b>EN 55014-2:2015</b> <b>EN 61000-3-2:2014</b> <b>EN 61000-3-3:2013</b>
<b>2011/65/EU</b>	<b>EN 63000:2018</b>
<b>2009/125/EC</b>	<b>EN 60312-1:2017</b>
<b>666/2013/EU</b>	<b>EN 60335-2-69:2012</b>

Authorized signatory:

Pierre Mikaelsson, Executive Vice President, Global Products & Services, Nilfisk NLT

Aug 18, 2021



## UK Declaration of Conformity

We,  
Nilfisk Ltd  
Nilfisk House, Bowerbank Way Gilwilly Industrial Estate  
Penrith Cumbria  
CA11 9BQ UK

Hereby declare under our sole responsibility that the

Products: VAC - Commercial - Dry  
Description: 220-240V 50-60Hz, IPX0  
Type: GM80, GM80P

Are in compliance with the following standards:

EN 60335-1:2012+A11:2014+A13:2017  
EN 60335-2-69:2012  
EN 55014-1:2017+A11:2020  
EN 55014-2:2015  
EN 61000-3-2:2014  
EN 61000-3-3:2013  
EN 60312-1:2017  
EN 63000:2018

Following the provisions of:

Supply of Machinery (Safety) Regulations 2008/1597  
Electromagnetic Compatibility Regulations 2016/1091  
The Restriction of the Use of Certain Hazardous Substances in Electrical and Electronic Equipment  
Regulations 2012/3032  
Ecodesign for Energy-Related Products and Energy Information (Amendment) (EU Exit) Regulations 2019 -  
2019/539  
Ecodesign for Energy-Related Products and Energy Information (Amendment) (EU Exit) Regulations 2019 -  
2019/539

Penrith, 20-1-2021

A handwritten signature in black ink, appearing to read "Stewart Dennett".

Stewart Dennett  
GM/MD

## HEAD QUARTER

### DENMARK

Nilfisk A/S  
Tel.: +45 43 23 81 00  
www.nilfisk.com

## SALES COMPANIES

### ARGENTINA

Nilfisk Argentina  
Tel.: +54 11 4737 1877  
www.nilfisk.com

### AUSTRALIA

Nilfisk Pty Ltd  
Tel.: +61 1300 556 710  
www.nilfisk.com

### AUSTRIA

Nilfisk GmbH  
Tel.: +43 (0)662/45 64 00-90  
www.nilfisk.com

### BELGIUM

Nilfisk nv/sa  
Tel.: +32 (0) 2 467 60 50  
www.nilfisk.com

### BRAZIL

Nilfisk do Brasil  
Tel.: +55 11 3959-0300  
www.nilfisk.com

### CANADA

Nilfisk Canada Company  
Tel.: +1 800-668-8400  
www.nilfisk.com

### CHILE

Nilfisk S.A. (Comercial KCS Ltda)  
Tel.: +56 2 2684 5000  
www.nilfisk.com

### CHINA

Nilfisk  
Tel.: +86 400 080 3200  
www.nilfisk.com

### CZECH REPUBLIC

Nilfisk s.r.o.  
Tel.: +420 244 090 912  
www.nilfisk.com

### DENMARK

Nilfisk Danmark A/S  
Tel.: +45 72 18 21 00  
www.nilfisk.com

### FINLAND

Nilfisk Oy Ab  
Tel.: +358 207 890 602  
www.nilfisk.com

### FRANCE

Nilfisk SAS  
Tel.: +33 169 59 87 00  
www.nilfisk.com

### GERMANY

Nilfisk GmbH  
Tel.: +49 (0)7306-72-444  
www.nilfisk.com

### GREECE

Nilfisk A.E.  
Tel.: +30 210 911 9600  
www.nilfisk.com

### NETHERLANDS

Nilfisk B.V.  
Tel.: +31 036-5460700  
www.nilfisk.com

### HUNGARY

Nilfisk Kft.  
Tel.: +36 24 507 452  
www.nilfisk.com

### INDIA

Nilfisk India Limited  
Tel.: +91 80 4127 6510  
www.nilfisk.com

### IRELAND

Nilfisk  
Tel.: +35 01 294 3838  
www.nilfisk.com

### ITALY

Nilfisk SpA  
Tel.: +39 0523 1612000  
www.nilfisk.com

### JAPAN

Nilfisk Inc.  
Tel.: +81 045-620-3658  
www.nilfisk.com

### MALAYSIA

Nilfisk Sdn Bhd  
Tel.: +603 6275 3120  
www.nilfisk.com

### MEXICO

Nilfisk de Mexico, S. de R.L. de C.V.  
Tel.: +52 442 427 7774  
www.nilfisk.com

### NEW ZEALAND

Nilfisk Limited  
Tel.: +64 (09) 525 1130  
www.nilfisk.com

### NORWAY

Nilfisk AS  
Tel.: +47 22 75 17 80  
www.nilfisk.com

### PERU

Nilfisk S.A.C.  
Tel.: + 51 (1) 710 8283  
www.nilfisk.com

### POLAND

Nilfisk Sp. Z.O.O.  
Tel.: +48 22 104 22 00  
www.nilfisk.com

### PORTUGAL

Nilfisk Lda.  
Tel.: +351 219 112 670  
www.nilfisk.com

### SINGAPORE

Nilfisk Pte Ltd  
Tel.: +65 62681006  
www.nilfisk.com

### SLOVAKIA

Nilfisk s.r.o.  
Tel.: +421 948 339 353  
www.nilfisk.com

### SOUTH AFRICA

Nilfisk Middle East & Africa  
Tel.: +971 4264 4172  
www.nilfisk.com

### SOUTH KOREA

Nilfisk Korea  
Tel.: +82 02-3474-4141  
www.nilfisk.com

### SPAIN

Nilfisk S.A.U  
Tel.: +34 900 506 776  
www.nilfisk.com

### SWEDEN

Nilfisk AB  
Tel.: +46 031-706 73 00  
www.nilfisk.com

### SWITZERLAND

Nilfisk AG  
Tel.: +41 (0)71 923 84 44  
www.nilfisk.com

### THAILAND

Nilfisk Co. Ltd.  
Tel.: +66 0-2275-5630  
www.nilfisk.com

### TURKEY

Nilfisk A.S.  
Tel.: +90 216 275 76 00  
www.nilfisk.com

### UNITED ARAB EMIRATES

Nilfisk Middle East Branch  
Tel.: +971 4264 4172  
www.nilfisk.com

### UNITED KINGDOM

Nilfisk Ltd.  
Tel.: +44 01768 868995  
www.nilfisk.com

### UNITED STATES

Nilfisk, Inc.  
Tel.: +1 800-989-2235  
www.nilfisk.com

### VIETNAM

Nilfisk Vietnam  
Tel.: +84 0866 461 566  
www.nilfisk.com